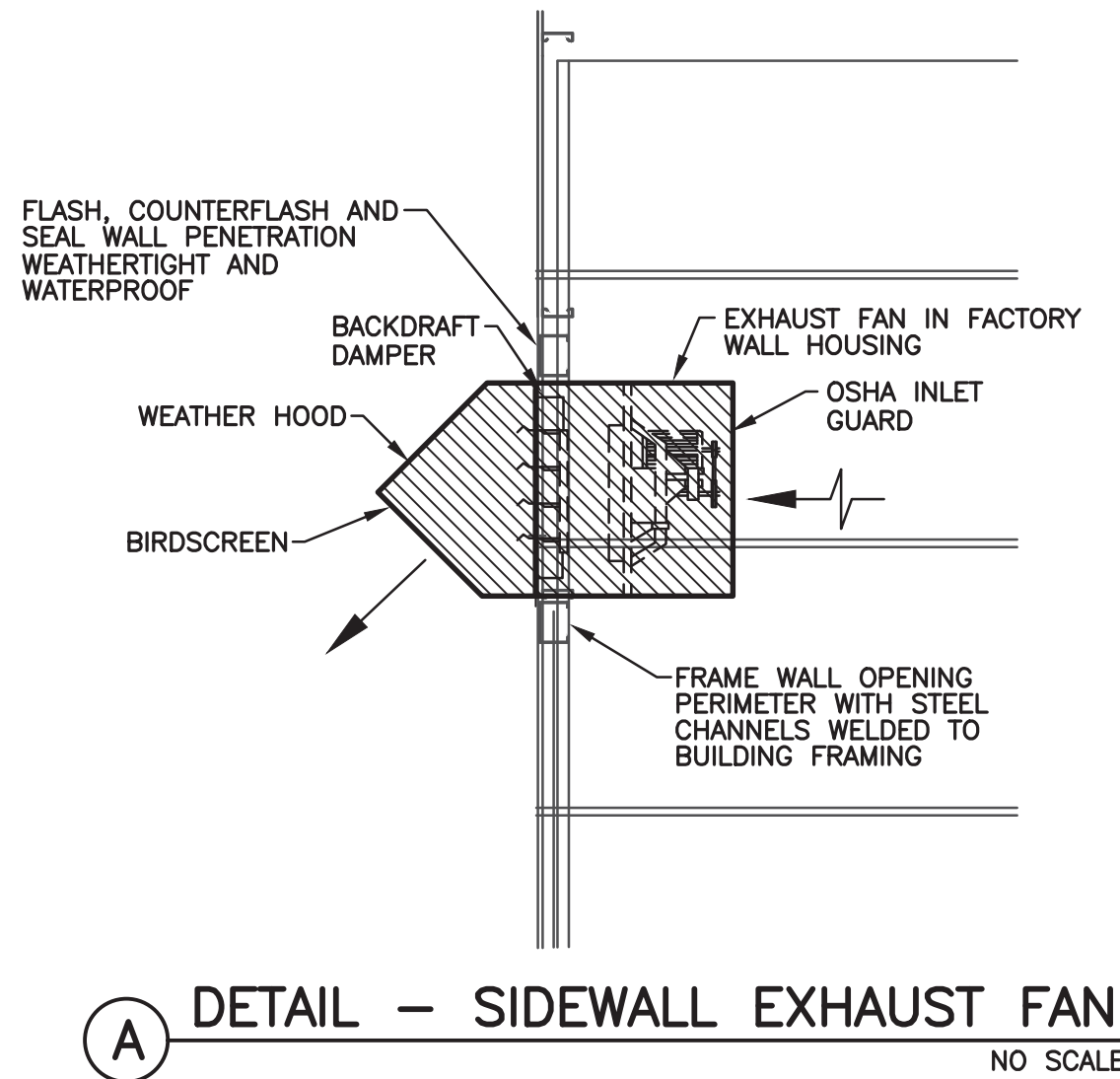


	1	2	3	4	5	6
A						
B						
C						
D						
E						
F						
	M3 NONE	MECHANICAL SCHEDULES AND DETAILS				
	1	2	3	4	5	6



PLUMBING FIXTURE SCHEDULE							
FIXTURE DESIGNATION	FIXTURE TYPE	MANUFACTURER /MODEL	CONNECTIONS		ELEC. DATA	DESCRIPTION	ACCESSORIES/FEATURES
			SUPPLY	WASTE			
HWSH	ACCESSIBLE WALL-HUNG LAVATORY SYSTEM -TWO USERS	BRADLEY EXPRESS LAVATORY SYSTEM TLX-2/C1/SS3-3300/R/T/3	3/4" CW 3/4" HW	1 1/2"	--	WALL HUNG ADA COMPLIANT LAVATORY SYSTEM FOR TWO USERS WITH BOWL, TWO(2) SPRAYHEADS, CONSTRUCTED OF TERREON SOLID-SURFACE MATERIAL COMPOSED OF A BIO-BASED RESIN RESISTANT TO CHEMICALS, STAINS, BURNS AND IMPACT. SYSTEM SHALL BE SECURED TO A HEAVY GAUGE 300 SERIES STAINLESS STEEL MOUNTING FRAME SUPPORT BASE SECURELY MOUNTED TO THE WALL. (PROVIDE BACKING PLATES/BLOCKING AS REQUIRED) MOUNT AT ADA ACCESSIBLE HEIGHT (REFER: ARCHITECTURAL INTERIOR ELEVATIONS). COLOR SELECTION BY ARCHITECT FROM FULL LINE OF AVAILABLE COLORS.	PROVIDE THE FOLLOWING ACCESSORIES: 1. TWO (2) VERGE METRO SERIES SPRAY HEAD MODULES EQUIPPED WITH INDIVIDUAL AERATORS EACH SERVED BY A SEPARATE PUSH BUTTON THAT PNEUMATICALLY ACTIVATES A NON-HOLD-OPEN AIR METERING VALVE WITH FIELD ADJUSTABLE TIMING (0-45 SECONDS). 2. TMA NAVIGATOR THERMOSTATIC MIXING VALVE ASSEMBLY 3. POLISHED CHROME-PLATED P-TRAP 4. TERREON WASTE RECEPTOR WITH STAINLESS STEEL CAN AND VINYL LINER
* THE MECHANICAL CONTRACTOR SHALL COORDINATE THE <u>EXACT</u> VOLTAGE & PHASE OF EACH AND EVERY EQUIPMENT ITEM WITH THE ELECTRICAL CONTRACTOR, PRIOR TO ORDER.							
ACCEPTABLE MANUFACTURERS:  CARRIERS - JAY R. SMITH, ZURN, WATTS, JOSAM, WADE, MIFAB.  LAVATORY SYSTEMS - BRADLEY, PRIOR APPROVED EQUAL.							

FAN SCHEDULE											
EF DESIG.	SERVES MOUNT	CFM	EXT. S.P.	RPM	H.P. (WATTS)	VOLTS PHASE	MANUF.	SONES	DRIVE	REMARKS	INTERLOCKS
VF-1,2,3,4	KITCHEN WALL	2500	-	-	1/2	115/1	HAMPTON BAY 52410 OR APPROVED EQUAL	-	DIRECT	18" DIAMETER FAN WITH WALL BRACKET, METAL CONSTRUCTION WITH SILVER FINISH, PLUG-IN POWER CORD, 3-SPEED CHAIN PULL AND OSCILLATING CHAIN PULL CONTROL	ROOM LIGHT SWITCH
EF-1	BUS BARN WALL	3000	0.38"	909	0.35	115/1	GREENHECK, AER-24-02-0615-VG	12.5	DIRECT	GRAVITY DAMPER; DAMPER GUARD; SHORT WALL HOUSING WITH INLET SCREEN; WEATHERHOOD; PERMATECTOR COATING; EC MOTOR WITH VARI-GREEN SPEED CONTROL	FAN SWITCH/ T-STAT
THE MECHANICAL CONTRACTOR SHALL COORDINATE THE <u>EXACT</u> VOLTAGE & PHASE OF EACH AND EVERY EQUIPMENT ITEM WITH THE ELECTRICAL CONTRACTOR, PRIOR TO ORDER.											

GENERAL MECHANICAL NOTES:

1. THE SIZE AND WEIGHT OF ALL HVAC EQUIPMENT IS BASED ON THE MANUFACTURER'S PUBLISHED DATA FOR THE SPECIFIED EQUIPMENT ITEMS. CONTRACTOR SHALL VERIFY THE EXACT WEIGHT OF THE SUBMITTED HVAC EQUIPMENT WITH THE STRUCTURAL ENGINEER, PRIOR TO INSTALLATION.
2. EQUIPMENT LOCATIONS SHOWN ARE INDICATED IN THEIR GENERAL LOCATIONS. THE CONTRACTOR SHALL COORDINATE EXACT LOCATIONS OF EQUIPMENT ALONG WITH DUCTWORK CONNECTIONS AND ROUTING WITH ARCHITECTURAL AND STRUCTURAL FEATURES. PROVIDE OFFSETS AS REQUIRED.
3. CONTRACTOR SHALL FIELD COORDINATE EXACT LOCATION, SIZE, ROUTING, ETC. OF ALL EQUIPMENT, DUCTWORK, AIR DEVICES, PIPING, CONDUIT, ETC. PRIOR TO WORK OF ANY KIND.
4. CONTRACTOR SHALL COORDINATE EXACT PLUMBING FIXTURE TYPE, QUANTITY, MOUNTING HEIGHT, ETC. WITH ARCHITECT & OWNER PRIOR TO ORDER, ROUGH-IN AND INSTALLATION. ROUGH-IN PER APPROVED SHOP DRAWING SUBMITTALS.
5. COORDINATE INSTALLATION OF PLUMBING FIXTURE CARRIERS WITH GENERAL CONTRACTOR. PROVIDE 2X TREATED WOOD SUPPORT BLOCKING IN WALLS (PLYWOOD IS NOT ACCEPTABLE) AND BLOCK OUT WALL FRAMING WHERE REQUIRED TO CLEAR CARRIER RISERS, FOOT SUPPORTS AND ARMS. ROUGH-IN AND INSTALL PER APPROVED SHOP DRAWING SUBMITTALS.
6. REFERENCE ARCHITECTURAL FLOOR PLANS AND INTERIOR ELEVATIONS FOR EXACT MOUNTING HEIGHT OF ALL PLUMBING FIXTURES PRIOR TO MATERIAL ORDER, ROUGH-IN AND INSTALLATION.
7. COORDINATE EXACT FIXTURE ROUGH-IN REQUIREMENTS WITH THE EQUIPMENT PROVIDER'S PLAN SHEETS, PIPING DIAGRAMS, ROUGH-IN DRAWINGS, INSTALLATION INSTRUCTIONS; INCORPORATE ALL INFORMATION THERETO INTO THIS PLAN SET ACCORDINGLY. CONTRACTOR SHALL PROVIDE ALL ADAPTERS, FERRULES, COPPER TUBING, REDUCERS, ETC. AS REQUIRED FOR COMPLETE INSTALLATION OF EQUIPMENT, APPLIANCES AND ACCESSORIES.
8. NO PIPE OR FITTING WHICH CONTAINS MORE THAN 0.25% LEAD SHALL BE USED IN THE WATER DISTRIBUTION SYSTEM. SOLDER AND FLUX SHALL CONTAIN LESS THAN OR EQUAL TO 0.2% LEAD. ALL PIPES, PIPE FITTINGS, PLUMBING FIXTURES, ETC. SHALL MEET OR EXCEED THE REDUCED LEAD REQUIREMENTS OF ACT 362.
9. CONTRACTOR SHALL VERIFY EXACT SIZE, LOCATION, SERVICE, DEPTH, INVERT ELEVATION, ETC. OF ALL EXISTING UTILITIES PRIOR TO WORK OF ANY KIND. NOTIFY ARCHITECT/ENGINEER IMMEDIATELY OF SIGNIFICANT DISCREPANCIES.



1439 Centre Ct., ste 401  
Alexandria, LA 71301  
Ph: 318.445.3151  
F: 318.445.3988  
Em: adg@adgllc.net



PHASE 2 - RENOVATIONS TO  
CARTER C. RAYMOND  
JUNIOR HIGH SCHOOL  
2510 SAINT CHARLES AVE, LECOMPT, LA 71346

RT  
RW  
08.08.25

PROJECT NO:  
DRAWN:  
CHECKED:  
DATE:  
LAST REV:

M-200